

CORROSIVE RESISTANT CYLINDERS

Water processing, food processing, marine, waste water treatment, etc.

STAINLESS STEEL CYLINDERS

- All external components manufactured from series 300 stainless steel
- Flash hard chrome plated stainless steel piston rod standard on all stainless steel cylinders. Available in 303 or 17-4 ph.
- An extra long, high strength bronze gland provides maximum bearing support and wear resistance.
- Electroless nickel plated, flush mounted captive cushion adjustment allows safe cushion adjustment under pressure
- One piece fine grained cast iron piston provides maximum strength and protection against shock loads (optional stainless steel piston with wear band)
- Pressure rated to 250 psi air service. Consult factory for hydraulic pressure service.
- Available in most mounting styles.

ELECTROLESS NICKEL PLATED CYLINDERS

- Electroless nickel plated cylinders are an economical alternative to stainless steel cylinders in many corrosive applications.
- All external components are electroless nickel plated (optional stainless steel fasteners are available depending on pressure rating)
- Chrome plated stainless steel piston rod standard on all electroless nickel plated cylinders.
- Available in most mounting styles.

ADDITIONAL CORROSIVE RESISTANT OPTIONS

- Epoxy paint (food grade, marine grade, etc.)
- Composite components available: heads, caps, pistons, tubes and glands.
- Nitrotec piston rods
- Black oxide of all external components

STATIC ROD LOCKS

Yates new YRL series rod locks offer the next generation in holding/locking devices with superior performance. These spring engaged, air-released rod locks supplement air cylinders and guide rods for holding in emergency stop or power off conditions. High pressure clamping forces ensure positive holding with minimal air required for lock release.

LONG LASTING PERFORMANCE

Designed for millions of trouble free cycles, the YRL rod lock offers a sealed design to withstand even the harshest wash down applications. Spring engaged design offers operation even in loss of power situations. The fast spring response also increases positioning accuracy.

BENEFITS

- No rod displacement
- Large clamping surface
- 2,000,000+ life cycles
- Sealed internal components
- Extremely low backlash
- NFPA sizes

APPLICATIONS

- Automation equipment
- Injection molding machines
- Hydraulic presses
- Machine tools
- Elevators/ scissor lifts

OPERATIONAL SPECIFICATIONS:

All YRL rod locks will operate in both directions, engaging with the same holding force. Rod locks can be mounted in any position. Rod rotation is not allowed when lock is engaged (not intended for torsional braking).

Release pressure can range from 60-120 psi.

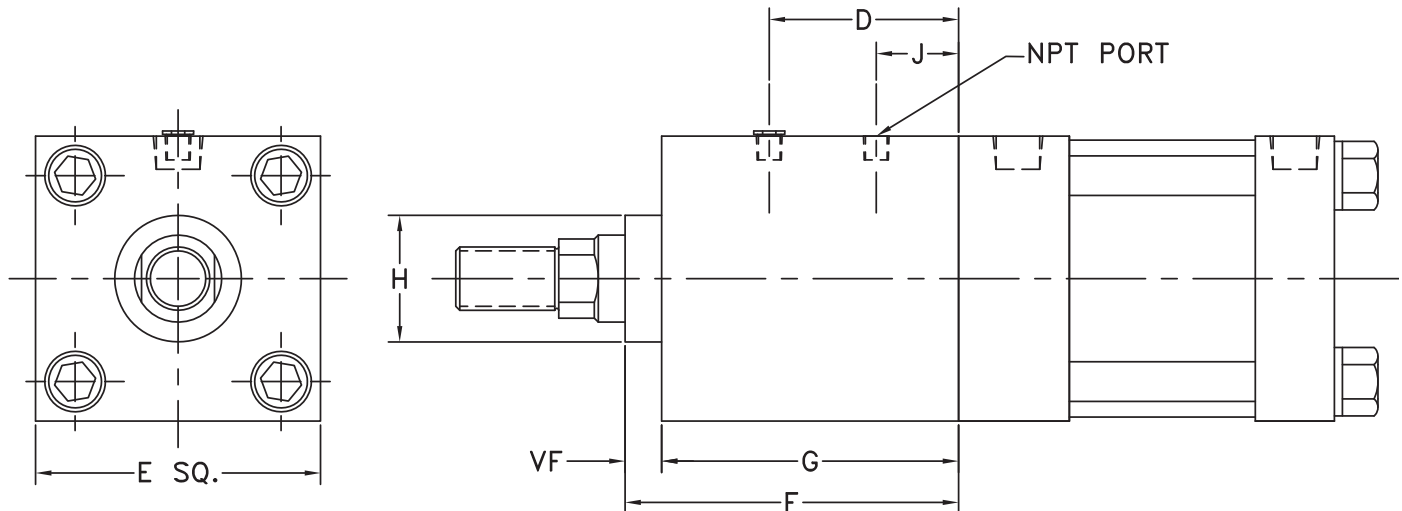
Buna-N seals are rated to 212°F.

Operating temperatures range from 33°F-150°F. Units are capable of intermittent use at temperatures up to 212°F.

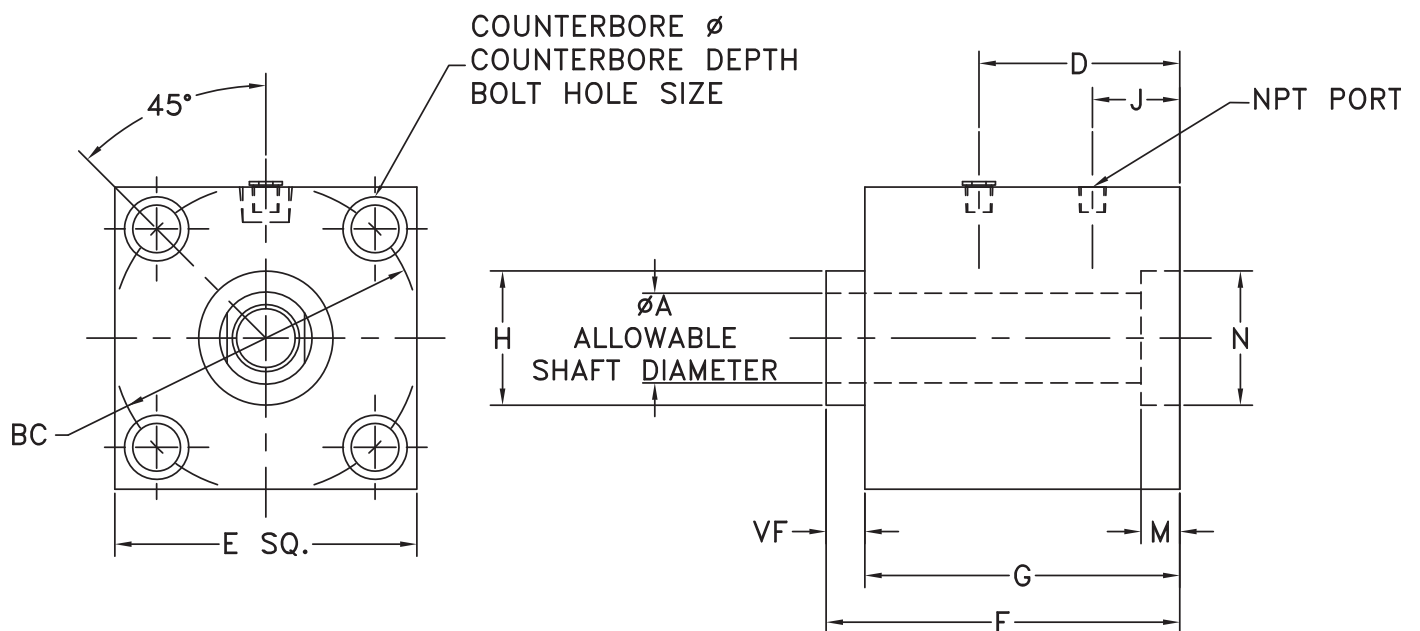


ROD LOCKS

CYLINDER MOUNTED



STAND ALONE



ROD LOCK DIMENSIONS

ROD LOCKS FOR NFPA CYLINDERS

| MODEL# | ØA* | D | E | F | VF | G | ØH* | J | HOLDING FORCE | NPT Air Inlet |
|----------------------------------|-------|------|------|------|-------|-------|-------|------|---------------|---------------|
| YRL-150-0625 | 0.625 | 1.95 | 2.00 | 2.77 | 0.375 | 2.397 | 1.125 | 0.91 | 180 LBS | 1/8-27 |
| YRL-200-0625 | 0.626 | 2.08 | 2.50 | 2.80 | 0.375 | 2.422 | 1.125 | 1.02 | 314 LBS | 1/8-27 |
| YRL-200-1000 | 1.000 | 2.58 | 2.50 | 3.88 | 0.500 | 3.375 | 1.500 | 1.58 | 325 LBS | 1/8-27 |
| YRL-250-0625 | 0.625 | 2.13 | 3.00 | 2.91 | 0.375 | 2.540 | 1.125 | 1.02 | 491 LBS | 1/8-27 |
| YRL-325-1000 | 1.000 | 2.99 | 3.75 | 4.48 | 0.500 | 3.976 | 1.500 | 1.56 | 830 LBS | 1/4-18 |
| YRL-400-1000 | 1.000 | 2.99 | 4.50 | 4.48 | 0.500 | 3.976 | 1.500 | 1.56 | 1300 LBS | 1/4-18 |
| YRL-400-1375 | 1.375 | 3.16 | 4.50 | 4.92 | 0.750 | 4.165 | 2.000 | 1.76 | 1300 LBS | 1/4-18 |
| YRL-500-1000 | 1.000 | 3.34 | 5.50 | 4.94 | 0.500 | 4.443 | 1.500 | 1.35 | 2000 LBS | 1/4-18 |
| YRL-600-1375 | 1.375 | 4.43 | 6.50 | 5.93 | 0.625 | 5.306 | 2.000 | 1.89 | 2850 LBS | 1/4-18 |
| *HØ -.001/-.003" AØ +.000/-.002" | | | | | | | | | | |

STAND ALONE ROD LOCK FOR GUIDE RODS

| MODEL# | ØA* | B | ØBC | E | D | G | F | VF | ØH* | J |
|--|-------|------|-------|------|------|-------|------|-------|-------|------|
| YRL-150-0625-SA | 0.625 | 1.00 | 2.022 | 2.00 | 1.95 | 2.397 | 2.77 | 0.375 | 1.125 | 0.91 |
| YRL-200-0625-SA | 0.626 | 1.25 | 2.602 | 2.50 | 2.08 | 2.422 | 2.80 | 0.375 | 1.125 | 1.02 |
| YRL-200-1000-SA | 1.000 | 1.25 | 2.602 | 2.50 | 2.58 | 3.375 | 3.88 | 0.500 | 1.500 | 1.58 |
| YRL-250-0625-SA | 0.625 | 1.50 | 3.097 | 3.00 | 2.13 | 2.540 | 2.91 | 0.375 | 1.125 | 1.02 |
| YRL-325-1000-SA | 1.000 | 1.88 | 3.903 | 3.75 | 2.99 | 3.976 | 4.48 | 0.500 | 1.500 | 1.56 |
| YRL-400-1000-SA | 1.000 | 2.25 | 4.695 | 4.50 | 2.99 | 3.976 | 4.48 | 0.500 | 1.500 | 1.56 |
| YRL-500-1000-SA | 1.000 | 2.75 | 5.798 | 5.50 | 2.99 | 4.443 | 4.94 | 0.500 | 1.500 | 1.35 |
| YRL-600-1375-SA | 1.375 | 3.25 | 6.901 | 6.50 | 3.54 | 5.306 | 5.93 | 0.625 | 2.000 | 1.89 |
| *HØ -.001/-.003" AØ +.000/-.002" N+.003/+.001" | | | | | | | | | | |