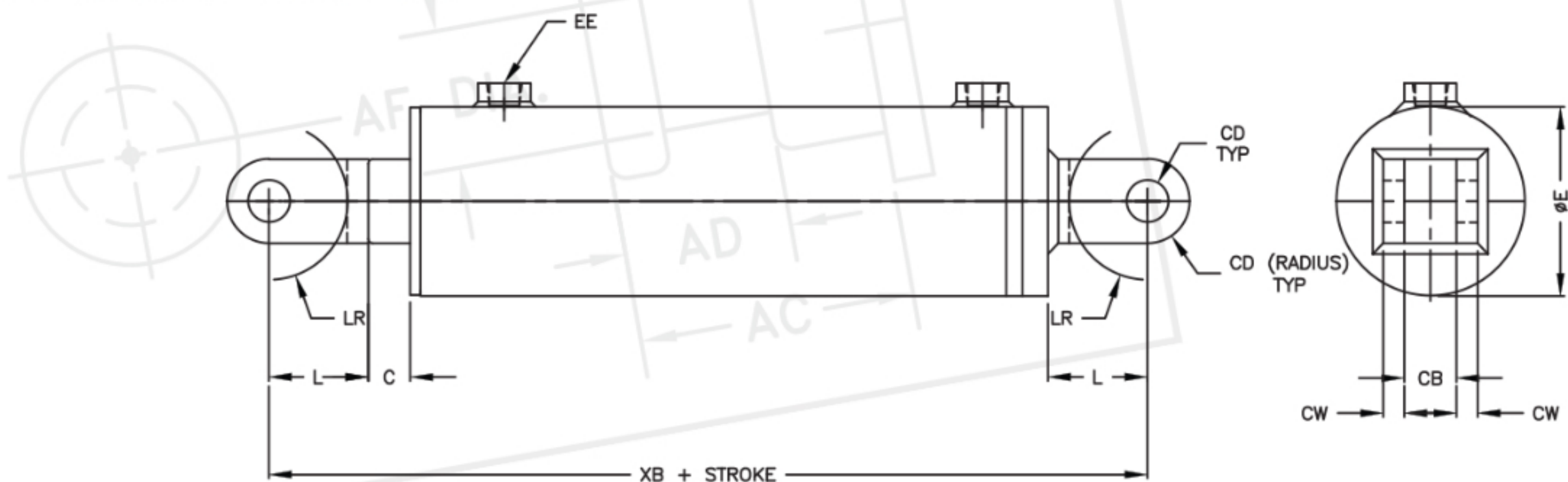
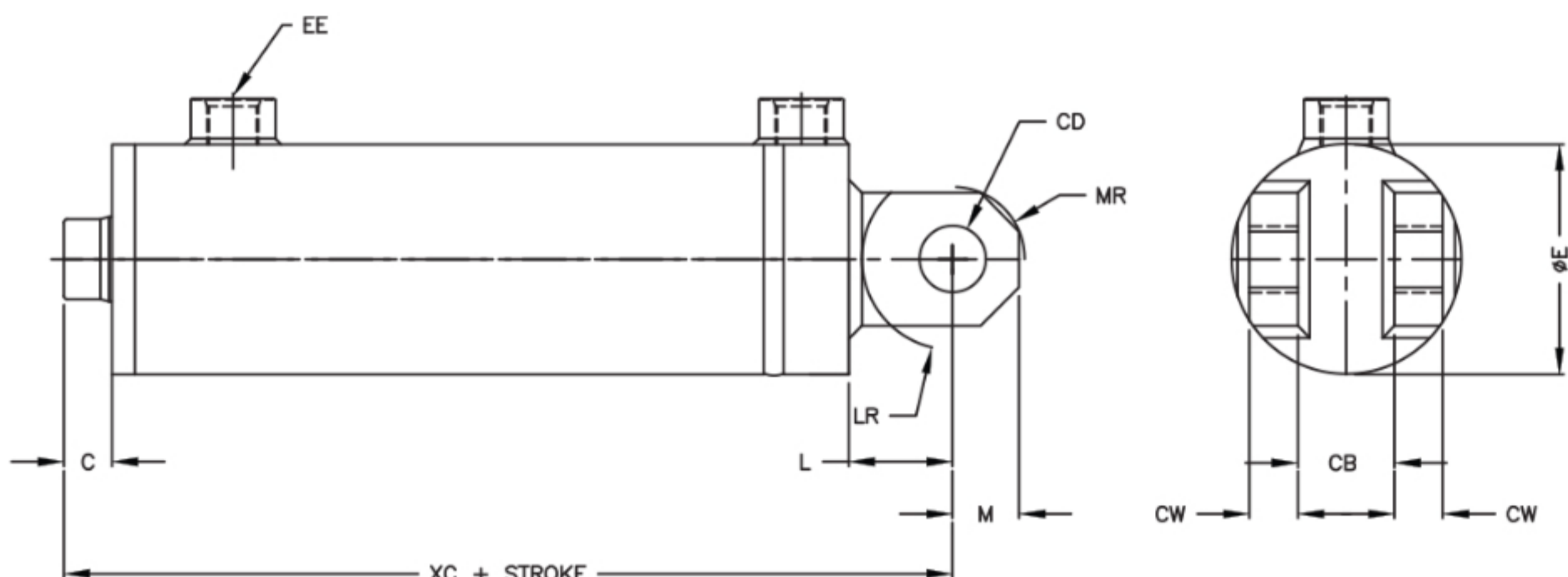


Welded Clevis Each End



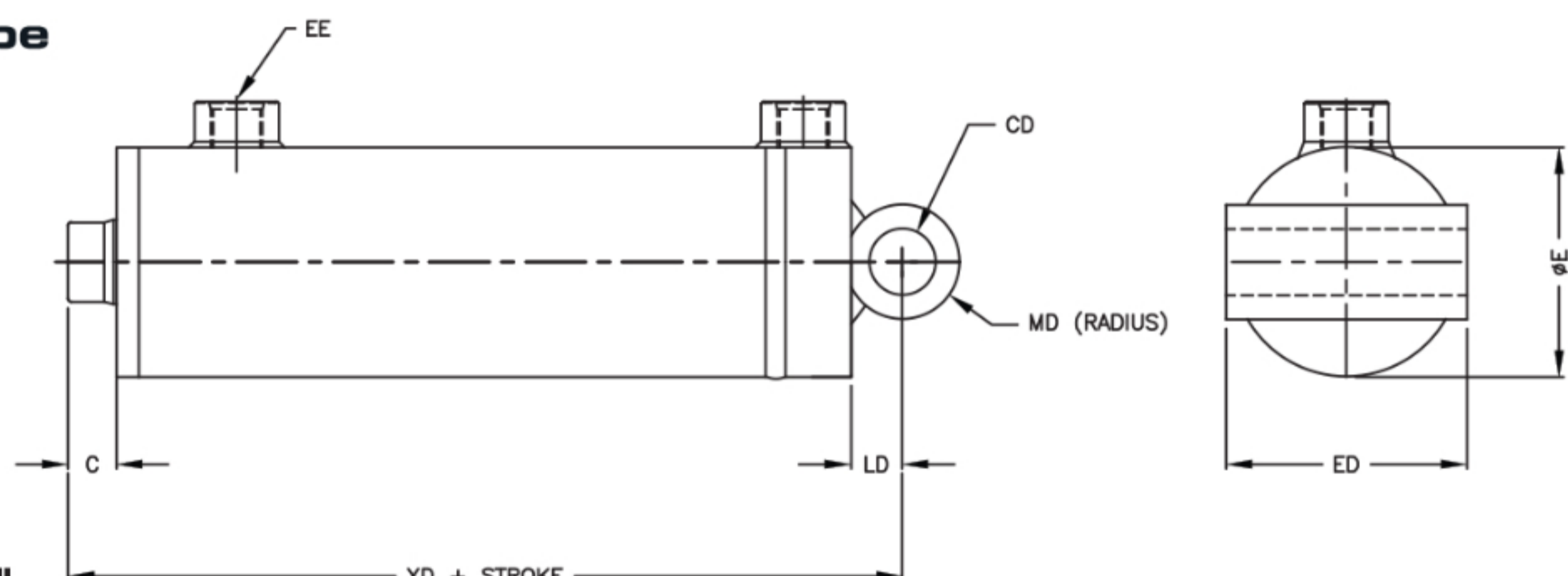
YATES STYLE "B"
1 1/2" - 6" BORE

Cap Clevis



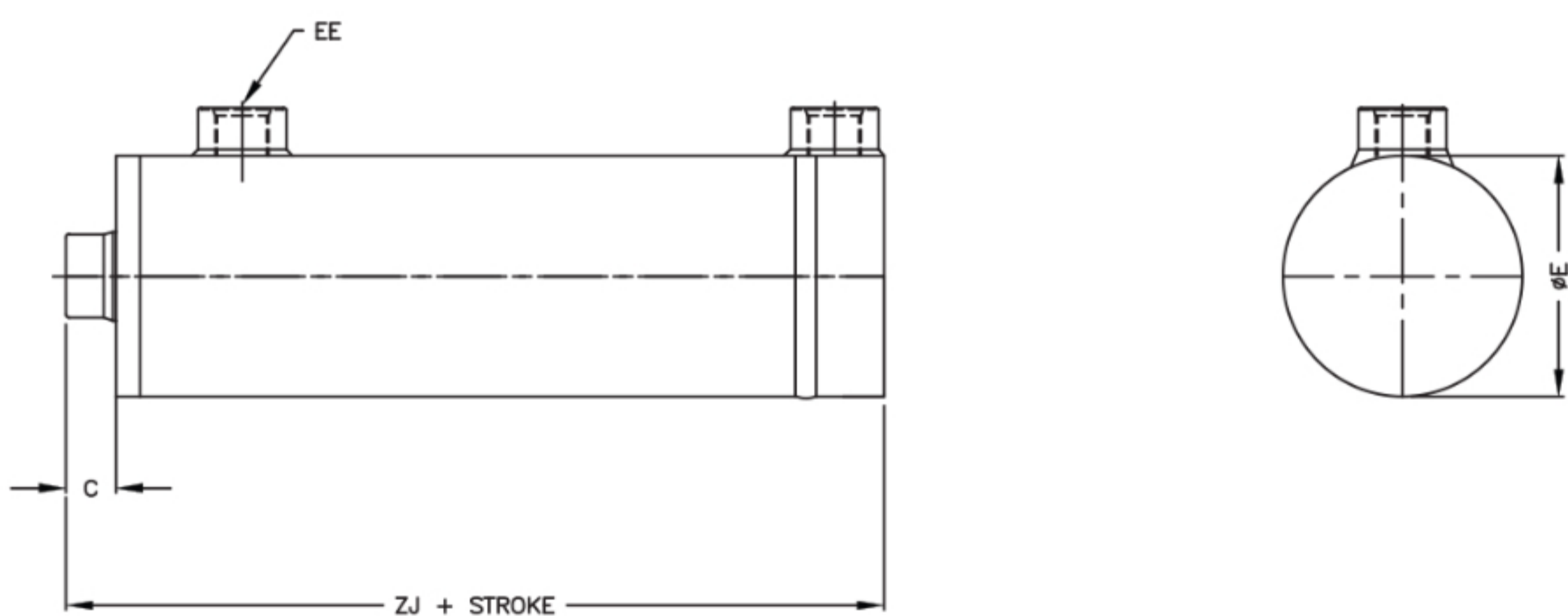
YATES STYLE "C"
1 1/2" - 6" BORE

Cap Crosstube



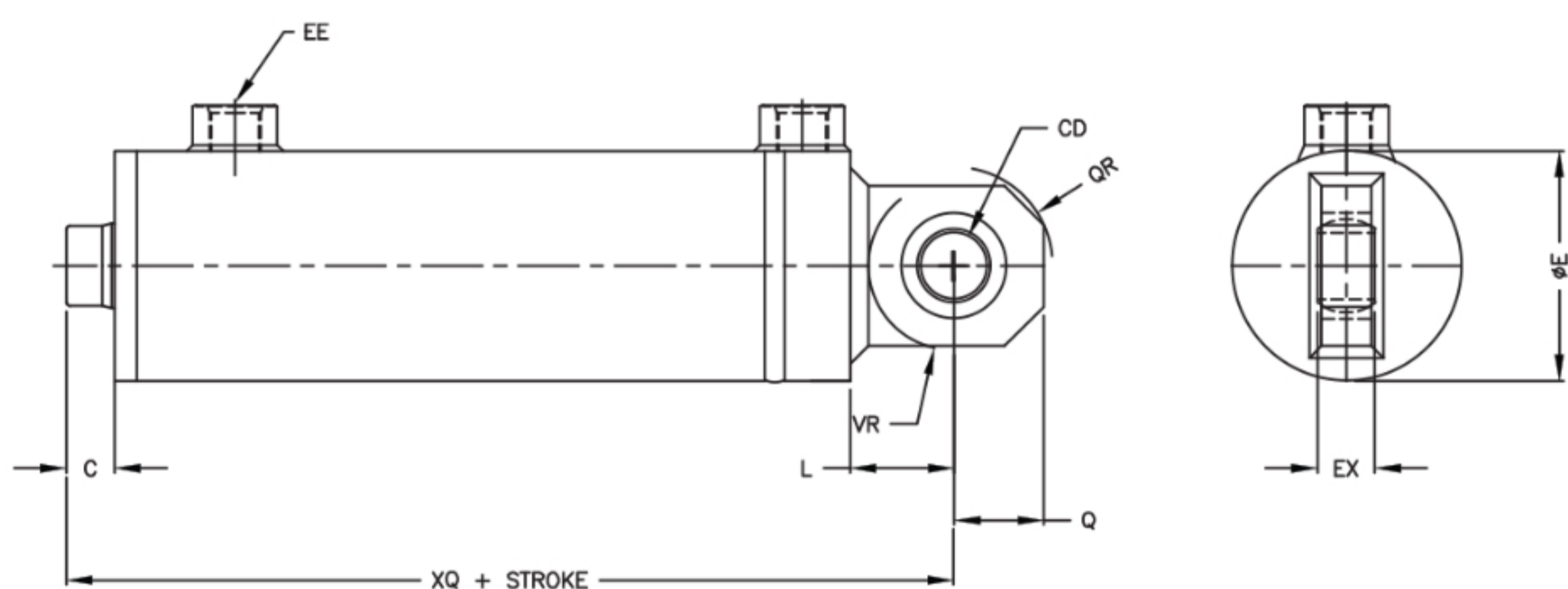
YATES STYLE "D"
1 1/2" - 6" BORE

No Mount



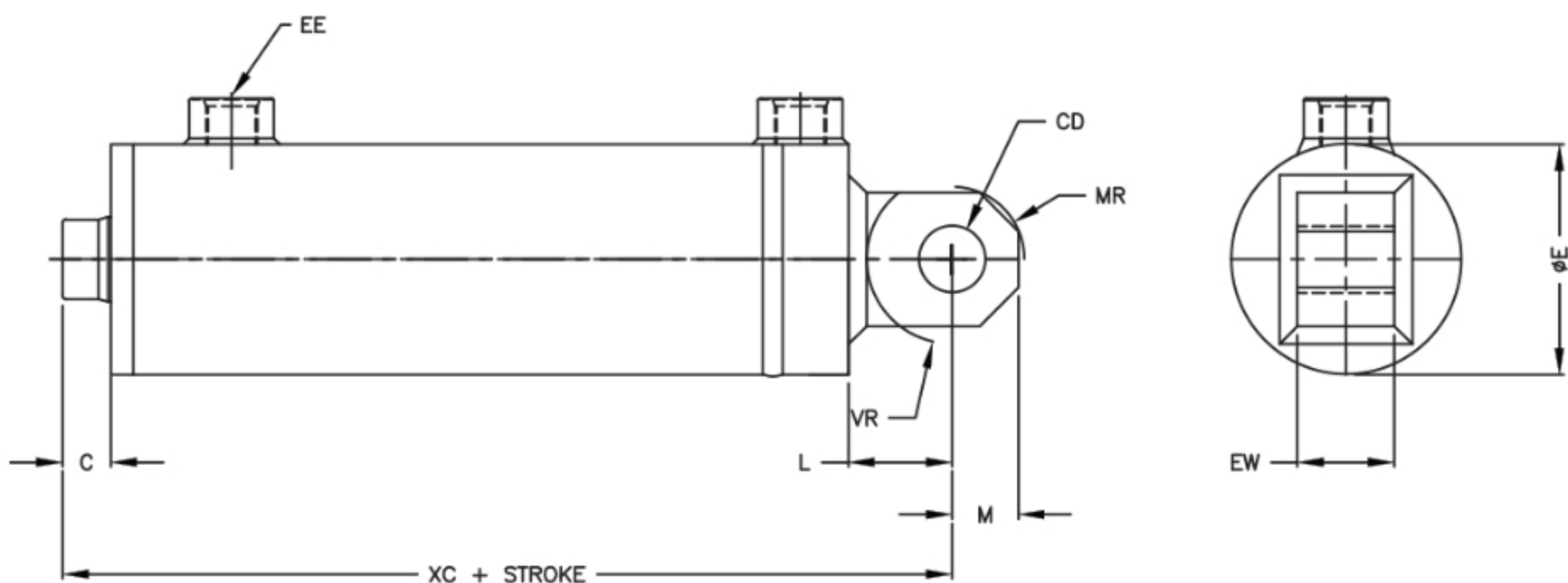
YATES STYLE "K"
1 1/2" - 6" BORE

Cap Spherical Bearing



YATES STYLE "Q"
1 1/2" - 6" BORE

Cap Eye



YATES STYLE "V"
1 1/2" - 6" BORE