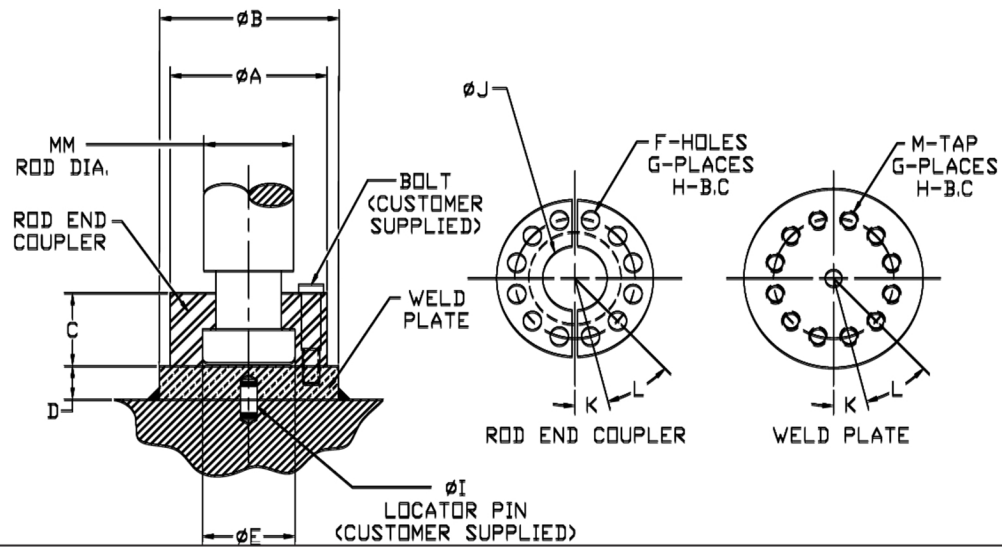


YATES ACCESSORIES

ROD END COUPLER AND WELD PLATE



ROD END COUPLER PART#	WELD PLATE PART#	WELD PLATE MATERIAL	MM	A	B	C	D	E	F	G	H	I	J	K	L	M
18-FEC-062	18-FEC-062-WP	CD 1018	5/8	1.500	2.000	.562	.500	.656	.218	4	1.125	.250	.406	45°	90°	10-24
18-FEC-100	18-FEC-100-WP	CD 1018	1	2.000	2.500	.875	.500	1.063	.281	6	1.500	.250	.750	30°	60°	1/4-20
18-FEC-137	18-FEC-137-WP	CD 1018	1 3/8	2.500	3.000	1.000	.625	1.438	.343	6	2.000	.250	.938	30°	60°	5/16-18
18-FEC-175	18-FEC-175-WP	CD 1018	1 3/4	3.000	4.000	1.250	.625	1.813	.343	8	2.375	.250	1.187	22.5°	45°	5/16-18
18-FEC-200	18-FEC-200-WP	CD 1018	2	3.500	4.000	1.625	.750	2.063	.406	12	2.688	.375	1.438	15°	30°	3/8-16
18-FEC-250	18-FEC-250-WP	CD 1018	2 1/2	4.000	4.500	1.875	.750	2.625	.406	12	3.188	.375	1.875	15°	30°	3/8-16
18-FEC-300	18-FEC-300-WP	CD 1018	3	5.000	5.500	2.375	1.000	3.125	.531	12	4.000	.375	2.375	15°	30°	1/2-13
18-FEC-350	18-FEC-350-WP	A 36 HRS	3 1/2	5.875	7.000	2.625	1.000	3.625	.656	12	4.688	.375	2.625	15°	30°	5/8-11
18-FEC-400	18-FEC-400-WP	A 36 HRS	4	6.375	7.000	2.625	1.000	4.125	.656	12	5.188	.375	3.125	15°	30°	5/8-11
18-FEC-450	18-FEC-450-WP	A 36 HRS	4 1/2	6.875	8.000	3.125	1.000	4.625	.656	12	5.688	.375	3.625	15°	30°	5/8-11
18-FEC-500	18-FEC-500-WP	A 36 HRS	5	7.375	8.000	3.125	1.000	5.125	.656	12	6.188	.375	4.000	15°	30°	5/8-11
18-FEC-550	18-FEC-550-WP	A 36 HRS	5 1/2	8.250	9.000	3.875	1.250	5.625	.781	12	6.875	.375	4.500	15°	30°	3/4-10
18-FEC-700	18-FEC-700-WP	A 36 HRS	7	10.375	11.000	4.000	1.750	7.125	1.031	12	8.750	.375	5.938	15°	30°	1"-8